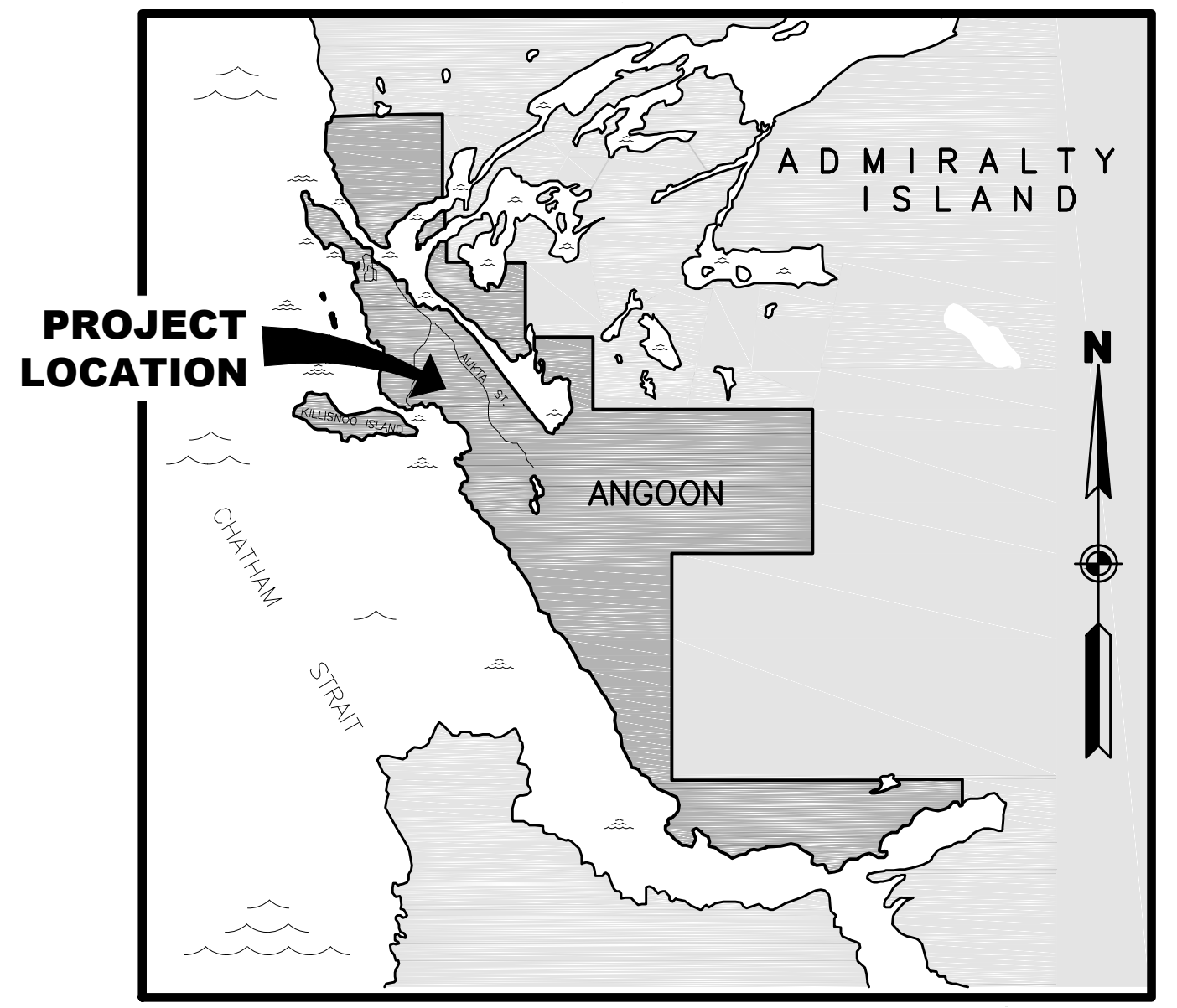
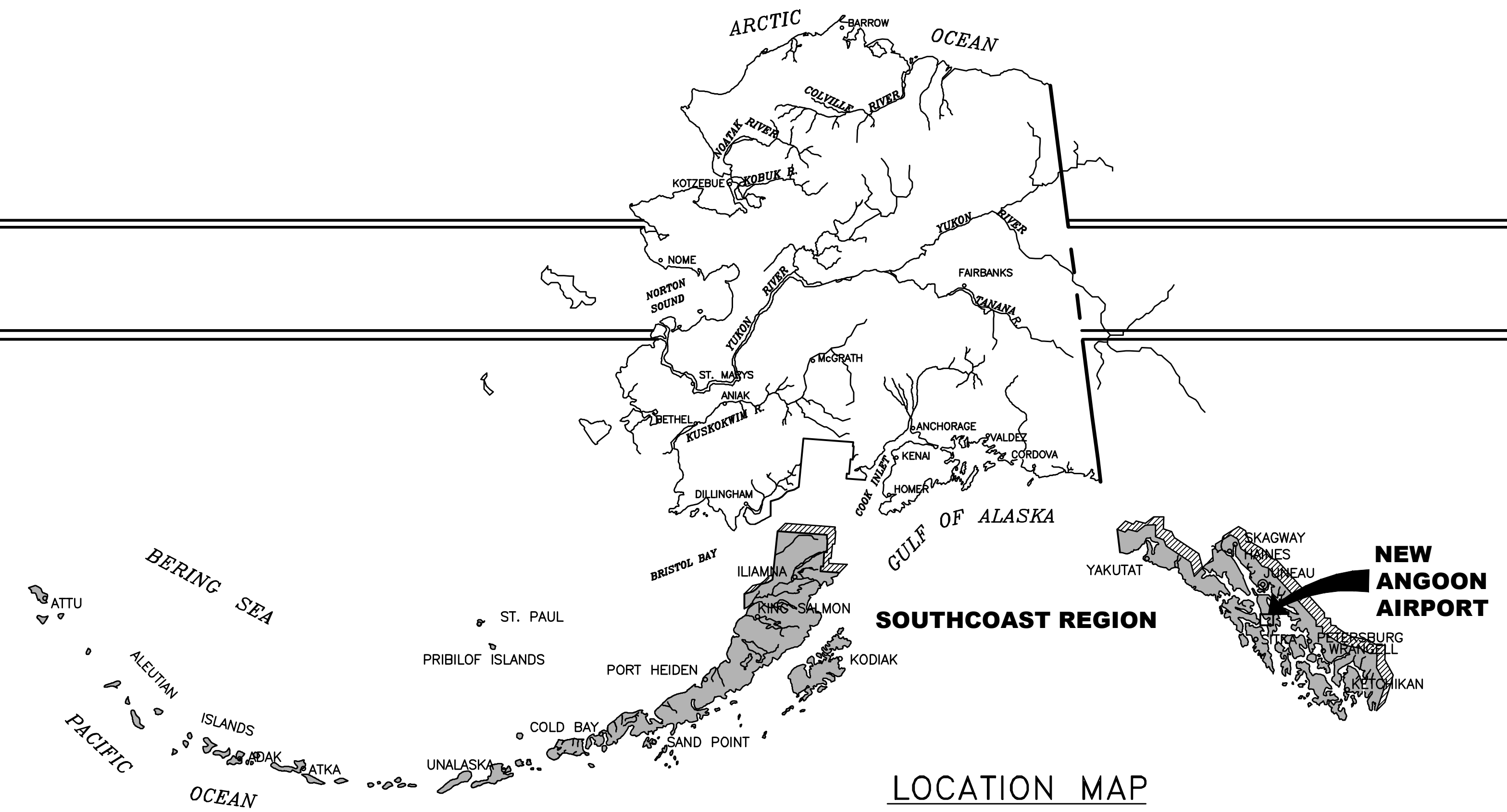


Designed By: EAT
 Drawn By: EAM
 Checked By: AMS

AIRPORT LAYOUT PLAN

ANGOON AIRPORT

ANGOON, ALASKA



LEGEND		
ITEM	EXISTING	ULTIMATE
AIRPORT REFERENCE POINT (ARP)		
ANTENNA		
APPROACH PROTECTION ZONE	-- ARPZ --	--- ARPZ ---
APPROACH SITING (THRESHOLD)	-- TSS --	--- TSS ---
AVIGATION EASEMENT		
BUILDINGS, IDENTIFIER		
BUILDING RESTRICTION LINE	-- BRL --	
DEPARTURE PROTECTION ZONE	-- DRPZ --	--- DRPZ ---
FENCE	-X- -X- -X-	
TREE/TERRIAN OBSTRUCTION, IDENTIFIER		
PAPI		
PROPERTY LINE	--- ---	--- ---
REIL		
ROTATING BEACON		
RUNWAY OBSTACLE FREE AREA	--- OFA ---	--- OFA ---
RUNWAY OBSTACLE FREE ZONE	--- OFZ ---	--- OFZ ---
RUNWAY PROTECTION ZONE	--- RPZ ---	--- RPZ ---
RUNWAY SAFETY AREA	--- RSA ---	--- RSA ---
SEGMENTED CIRCLE		
SHORELINE		
SURVEY MONUMENT		
THRESHOLD MARKERS/LIGHTS		
TOPOGRAPHIC CONTOURS		
UTILITY POLE		
VEGETATION / TREE LINE		
WIND CONE		

SHEET INDEX	
SHT #	TITLE
1	TITLE SHEET
2	AIRPORT DATA SHEET
3	AIRPORT LAYOUT PLAN DRAWING - NEAR TERM
4	AIRPORT LAYOUT PLAN DRAWING - ULTIMATE
5	AIRPORT AIRSPACE DRAWING (14 CFR PART 77)
6	INNER PORTION OF THE APPROACH SURFACE: RUNWAY 13 - NEAR TERM
7	INNER PORTION OF THE APPROACH SURFACE: RUNWAY 13 - ULTIMATE
8	INNER PORTION OF THE APPROACH SURFACE: RUNWAY 31 - NEAR TERM
9	INNER PORTION OF THE APPROACH SURFACE: RUNWAY 31 - ULTIMATE
10	TERMINAL AREA DRAWING
11	AIRPORT PROPERTY MAP

APPROVED: _____ **DATE:** _____
 CHRISTOPHER GOINS, PE, CM **DESIGN GROUP CHIEF**
 AIRPORT LAYOUT PLAN CONDITIONAL APPROVAL SUBJECT TO
 ALP APPROVAL LETTER DATED ____/____/____
 FAA AIRSPACE REVIEW NUMBER: _____
 _____ **DATE:** _____
 FAA, AIRPORTS DIVISION ALASKAN REGION, AAL-_____

BY	DATE	REVISION

STATE OF ALASKA
DEPARTMENT OF TRANSPORTATION
AND PUBLIC FACILITIES
SOUTHCOAST REGION

ANGOON AIRPORT
 ANGOON, ALASKA
 AIRPORT LAYOUT PLAN

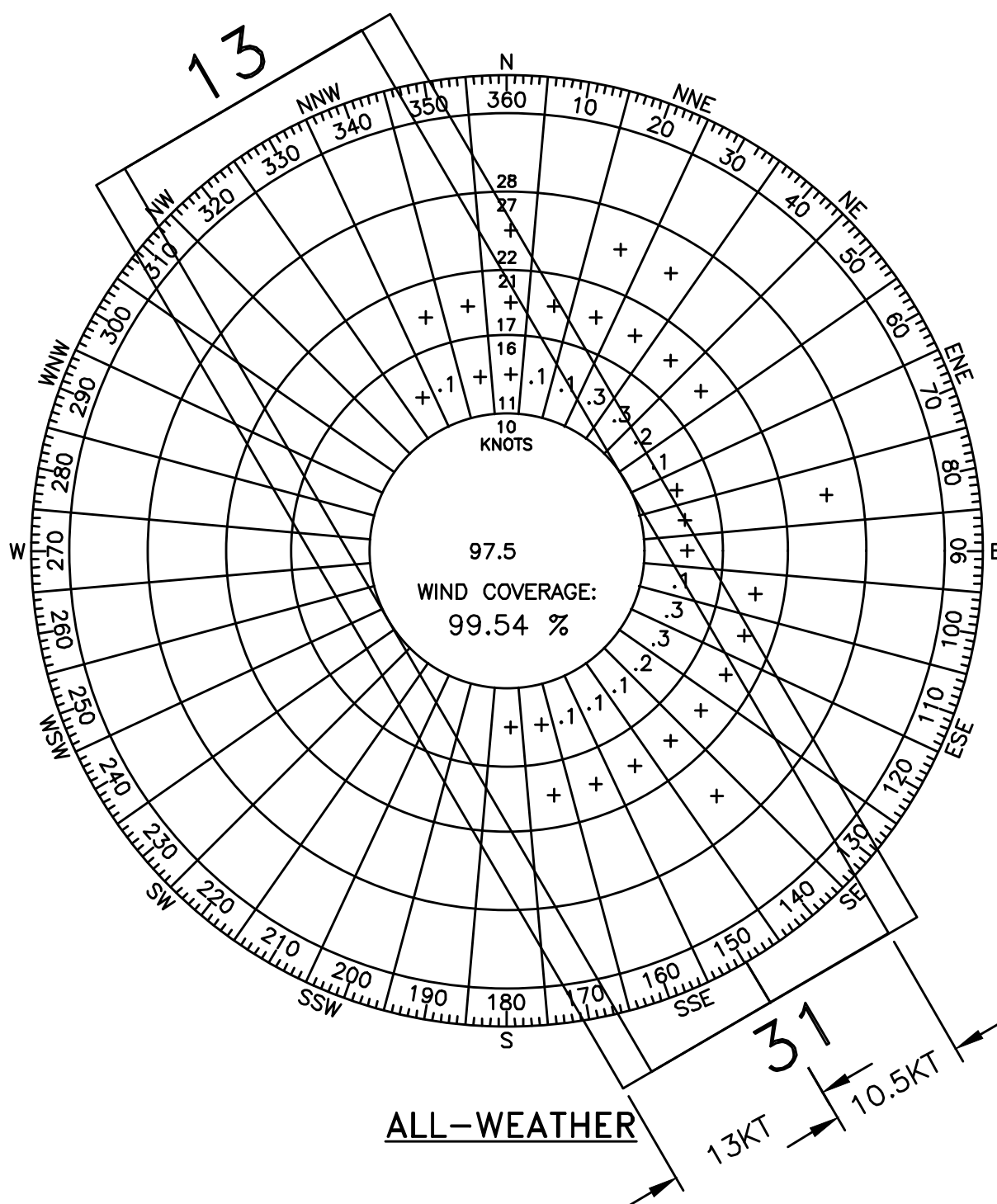
TITLE SHEET

DATE: 2/12/2020

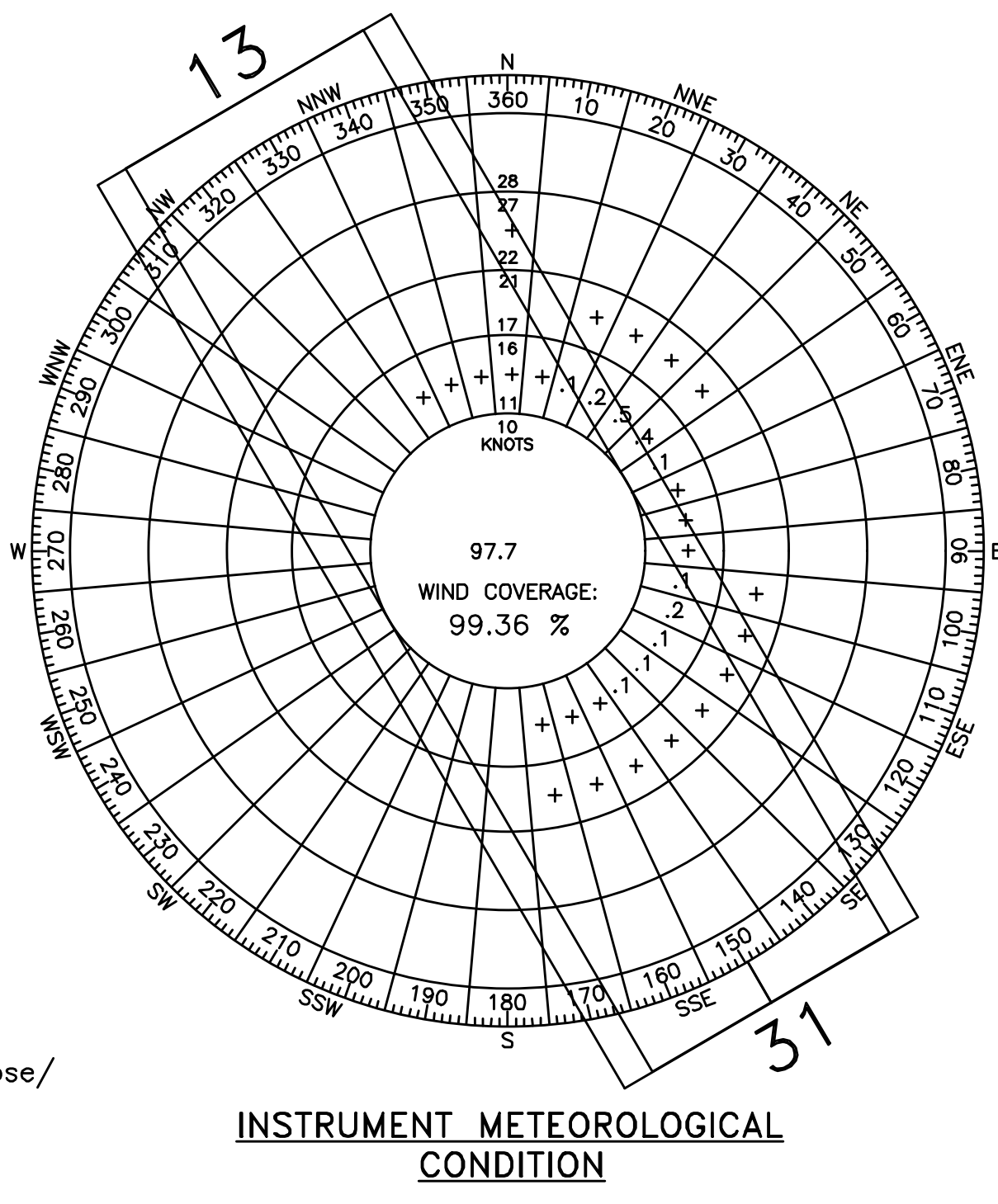
SHEET: 1 OF 11

Date Plotted: 13/04/2020, 3:10 PM
 Layout Name: 11111
 File Name: P:\2017\171717\Angoon_Airport\AC0000\ra171717.dwg

Date Plotted: 12/12/2020, 3:00 PM
 Layout Name: Data
 File Name: P:\2017\171717LINE-ANGON-A\Fpport\ANGON001.rvt\171717.LIN.dwg
 Designed By: EAT
 Drawn By: PAM 2/2020
 Checked By: 2 AJS
 1:39 PM



DATA SOURCE: <https://airports-gis.faa.gov/windrose/>
 ASOS STATION NAME: ANGOON SEAPLANE BASE
 TIME PERIOD: 2008 - 2017



INSTRUMENT METEOROLOGICAL CONDITION

AIRPORT DATA		
ITEM	NEAR TERM	ULTIMATE
ICAO IDENTIFIER	TBD	SAME
NATIONAL AIRPORT IDENTIFIER	TBD	SAME
AIRPORT REFERENCE CODE (ARC)	B-II SMALL	SAME
CRITICAL AIRCRAFT	WINGSPAN: KING AIR APPROACH SPEED: NAVAJO	SAME
MEAN MAX TEMPERATURE, HOTTEST MONTH	62°F, JUL	SAME
AIRPORT ELEVATION (NAVD88)	123.6'	SAME
AIRPORT NAVIGATIONAL AIDS	BEACON	SAME
MISCELLANEOUS FACILITIES	LIGHTED WINDCONES, SEGMENTED CIRCLE, ASOS	SAME
MAGNETIC DECLINATION, YEAR, RATE OF CHANGE	18°22'E, 2020	0°17'W PER YEAR
NPIAS SERVICE LEVEL (P, CS, R, GA)	GA	SAME
STATE EQUIVALENT SERVICE ROLE	COMMUNITY	SAME

RUNWAY 13-31 DATA				
ITEM	NEAR TERM		ULTIMATE	
	13	31	13	31
RUNWAY CATEGORY (UTILITY, OTHER THAN UTILITY)	UTILITY	UTILITY	SAME	SAME
RUNWAY DESIGN CODE (RDC)	B-II(S)-5000		SAME	
APPROACH REFERENCE CODE (APRC)	B-II(S)-5000		SAME	
DEPARTURE REFERENCE CODE (DPRC)	B-II(S)-5000		SAME	
RUNWAY SURFACE	ASPHALT		SAME	
PAVEMENT STRENGTH (SW, DW, DTW x1000lbs/PCN)	54/F/D/Y/T PCN TBD		SAME	
SURFACE TREATMENT	NONE		SAME	
EFFECTIVE RUNWAY GRADIENT (%)	-0.50	0.50	-0.50	0.50
RUNWAY DIMENSIONS (LENGTHxWIDTH)	3300'x75'		4000'x75'	
DISPLACED THRESHOLD	N/A	N/A	N/A	N/A
RUNWAY SAFETY AREA (RSA) DIMENSIONS	3900'x150'		4600'x150'	
RUNWAY LIGHTING TYPE	MIRL		SAME	
RUNWAY PROTECTION ZONE (RPZ) DIMENSIONS	250'x450' x1000'	250'x450' x1000'	SAME	SAME
RUNWAY MARKING TYPE (V, NP, P)	NP	NP	NP	NP
PART 77 APPROACH CATEGORY	20:1	20:1	SAME	SAME
14 CFR 77 APPROACH TYPE (V, NP, P)	NP	NP	NP	NP
VISIBILITY MINIMUMS	1 SM	1 SM	SAME	SAME
AERONAUTICAL SURVEY REQUIRED FOR APPROACH	NVGS	NVGS	SAME	SAME
RUNWAY DEPARTURE SURFACE	Y	Y	Y	Y
OBJECT FREE AREA (OFA) DIMENSIONS	3900'x500'	3900'x500'	4600'x500'	4600'x500'
OBSTACLE FREE ZONE (OFZ) DIMENSIONS	3700'x250'	3700'x250'	4400'x250'	4400'x250'
THRESHOLD SITING SURFACE (TSS) APPROACH SLOPE	20:1	20:1	SAME	SAME
VISUAL AND INSTRUMENT NAVAIDS	PAPI, REIL	REIL	PAPI, REIL	REIL
TOUCHDOWN ZONE ELEVATIONS (NAVD88)	120.3'	113.8'	120.3'	110.3'

MODIFICATION TO STANDARDS					
DESCRIPTION	STANDARD	EXISTING	ULTIMATE	AIRSPACE #	APPROVAL DATE
NONE REQUIRED					

WIND DATA		
RUNWAY	10.5kt AW/IFR	13kt AW/IFR
13-31	99.01%/98.72%	99.54%/99.36%

NONSTANDARD CONDITIONS			
ITEM	STANDARD	EXISTING	ULTIMATE
NONE REQUIRED			

DECLARED DISTANCES					
	RUNWAY	TORA	TODA	ASDA	LDA
EXISTING	3300	3300	3300	3300	3300
ULTIMATE	4000	4000	4000	4000	4000

PACS & SACS (OR OTHER CONTROL)								
PID	DESIGNATION	LATITUDE	LONGITUDE	ELLIPSOID HEIGHT	NORTHING	EASTING	ELEVATION	DESCRIPTION
TBD								
TBD								
TBD								

GEOGRAPHIC COORDINATES (NAD83) & ELEVATIONS (NAVD88)						
ITEM	NEAR TERM LATITUDE	NEAR TERM LONGITUDE	NEAR TERM ELEVATION	ULTIMATE LATITUDE	ULTIMATE LONGITUDE	ULTIMATE ELEVATION
AIRPORT REFERENCE POINT	57°28'36.15" N	134°33'04.29" W	117.00'	57°28'33.17" N	134°33'01.07" W	115.30'
RUNWAY 13 THRESHOLD	57°28'50.20" N	134°33'19.50" W	123.60'	57°28'50.20" N	134°33'19.50" W	123.60'
RUNWAY 31 THRESHOLD	57°28'22.11" N	134°32'49.09" W	108.80'	57°28'16.15" N	134°32'42.64" W	105.30'

NOTES

- THIS ALP DRAWING SET IS BASED ON AN AIRBORNE LIDAR SURVEY COMPLETED BY KODIAK MAPPING IN THE SPRING OF 2017 AND A CONTROL AND TOPOGRAPHIC SURVEY PERFORMED BY DOT&PF IN 2017, BOTH IN ACCORDANCE WITH FAA AC 150/5300-18B. THIS ALP WAS CREATED IN ACCORDANCE WITH FAA AC 150/5300-13A, AC 150/5070-6B, AND SOP 2.00 IN FEBRUARY 2020.
- VERTICAL DATUM IS NAVD 1988 USING GEOID12A.
- HORIZONTAL DATUM IS NAD83 (2011). DRAWING COORDINATES ARE ALASKA STATE PLANE ZONE 1, U.S. SURVEY FEET, UNLESS NOTED OTHERWISE.

TAXIWAY DATA				
ITEM	NEAR TERM		ULTIMATE	
	A	B	A	B
TAXIWAY DESIGN GROUP	2	N/A	SAME	2
WIDTH	35'	N/A	SAME	35'
SHOULDER WIDTH	15'	N/A	SAME	15'
TAXIWAY SAFETY AREA (TSA) WIDTH	79'	N/A	SAME	79'
TAXIWAY OBJECT FREE AREA (TOFA) WIDTH	131'	N/A	SAME	131'
DISTANCE TO FIXED OR MOVEABLE OBJECT	57.5'	N/A	SAME	57.5'
TAXIWAY SAFETY EDGE MARGIN (TSEM)	7.5'	N/A	SAME	7.5'
LIGHTING TYPE	MITL	N/A	SAME	MITL

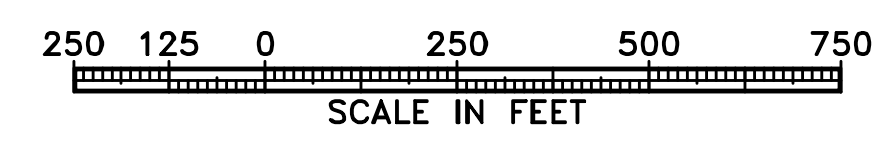
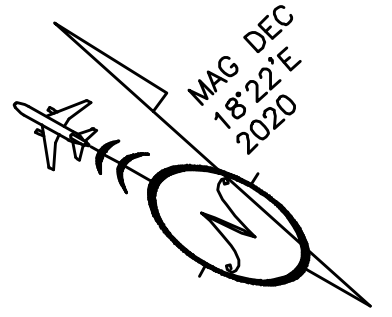
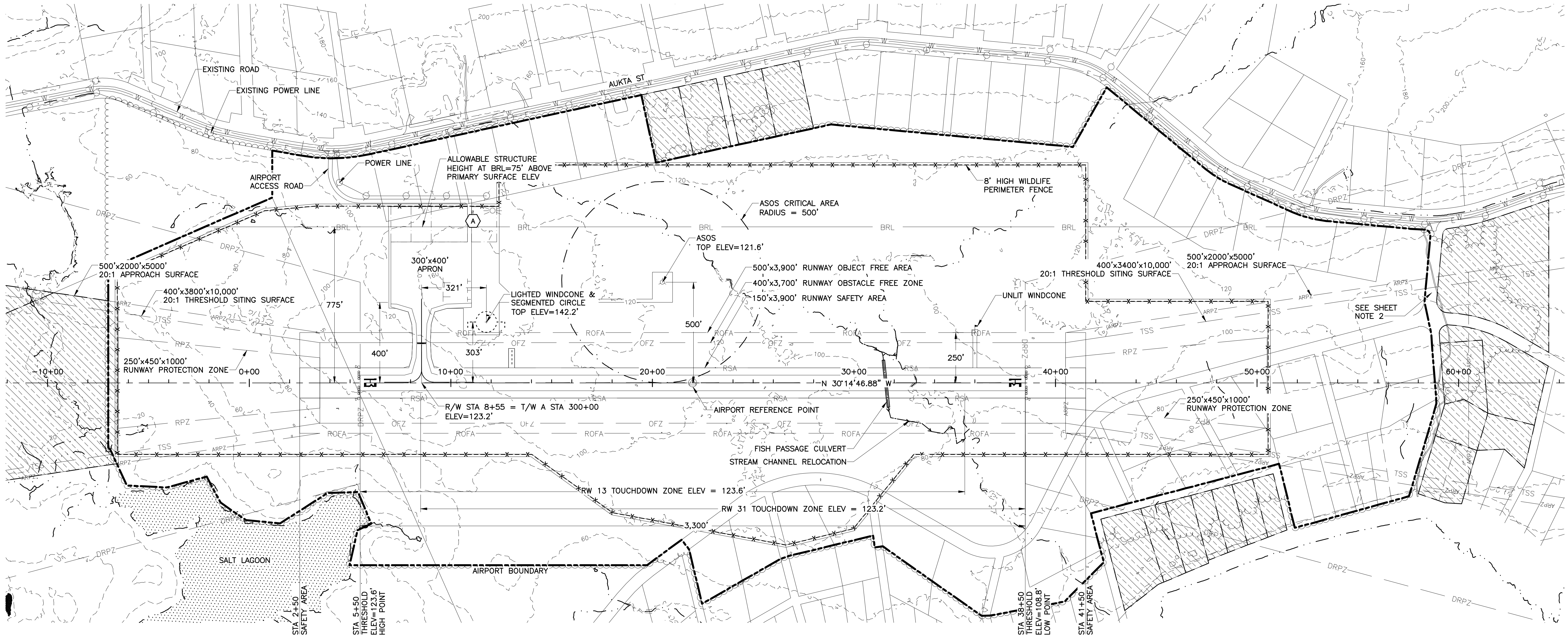
BY	DATE	REVISION

**STATE OF ALASKA
DEPARTMENT OF TRANSPORTATION
AND PUBLIC FACILITIES
SOUTHCOAST REGION**

ANGOON AIRPORT
ANGOON, ALASKA
AIRPORT LAYOUT PLAN

AIRPORT DATA SHEET

DATE: 2/12/2020
SHEET: 2 OF 11



SHEET NOTES:

1. SEE INNER APPROACH AND AIRSPACE DRAWINGS FOR BUILDING ELEVATIONS AND OBSTRUCTIONS.
2. PLATTED PRIVATE PROPERTY ACCESS TO BE RELOCATED DURING NEAR TERM DEVELOPMENT.

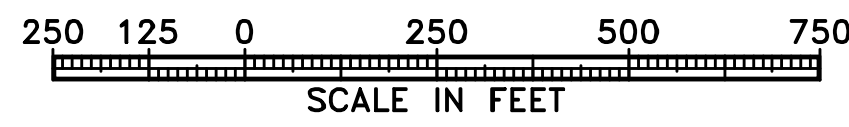
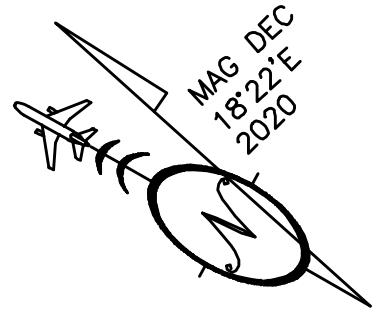
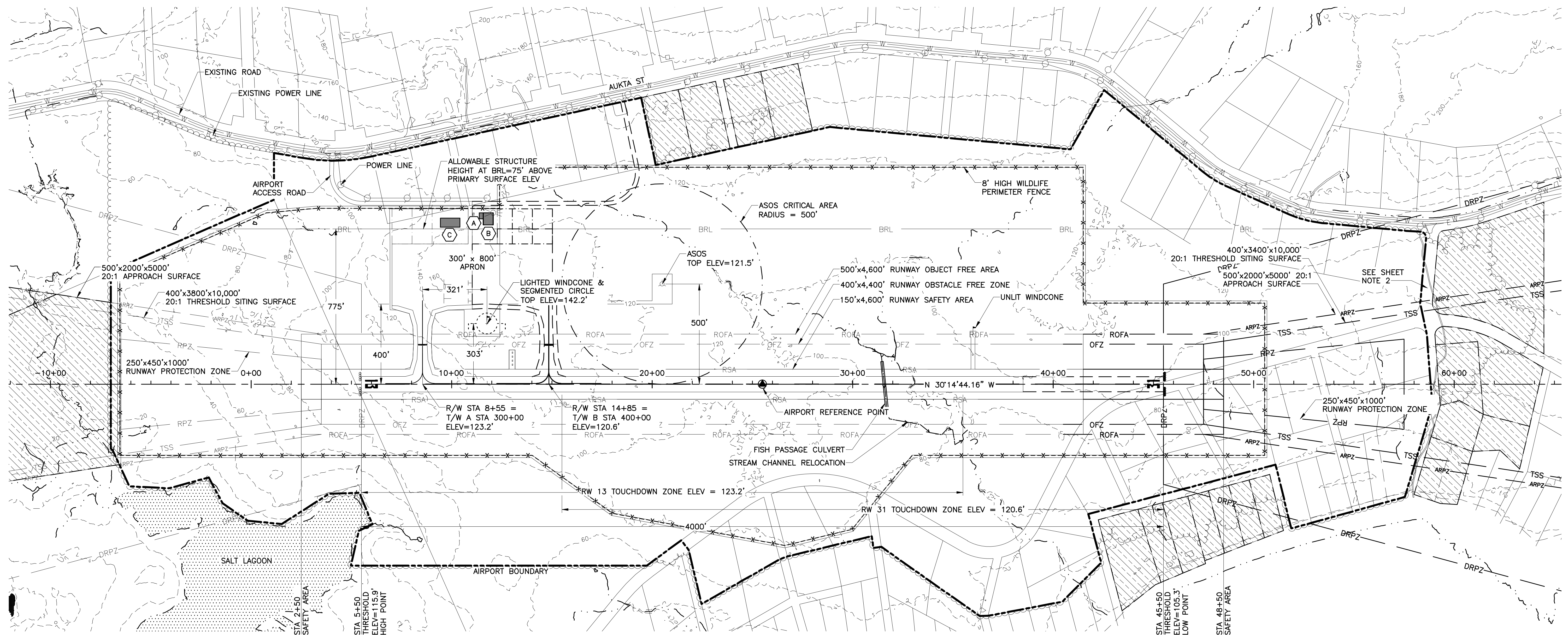
BY	DATE	REVISION

**STATE OF ALASKA
 DEPARTMENT OF TRANSPORTATION
 AND PUBLIC FACILITIES
 SOUTHCOAST REGION**

ANGOON AIRPORT
 ANGOON, ALASKA
 AIRPORT LAYOUT PLAN

DATE:
2/12/2020
 SHEET:
3
 OF
11

AIRPORT LAYOUT PLAN DRAWING - NEAR TERM



SHEET NOTES:

1. SEE INNER APPROACH AND AIRSPACE DRAWINGS FOR BUILDING ELEVATIONS AND OBSTRUCTIONS.
2. PLATTED PRIVATE PROPERTY ACCESS TO BE RELOCATED DURING NEAR TERM DEVELOPMENT.

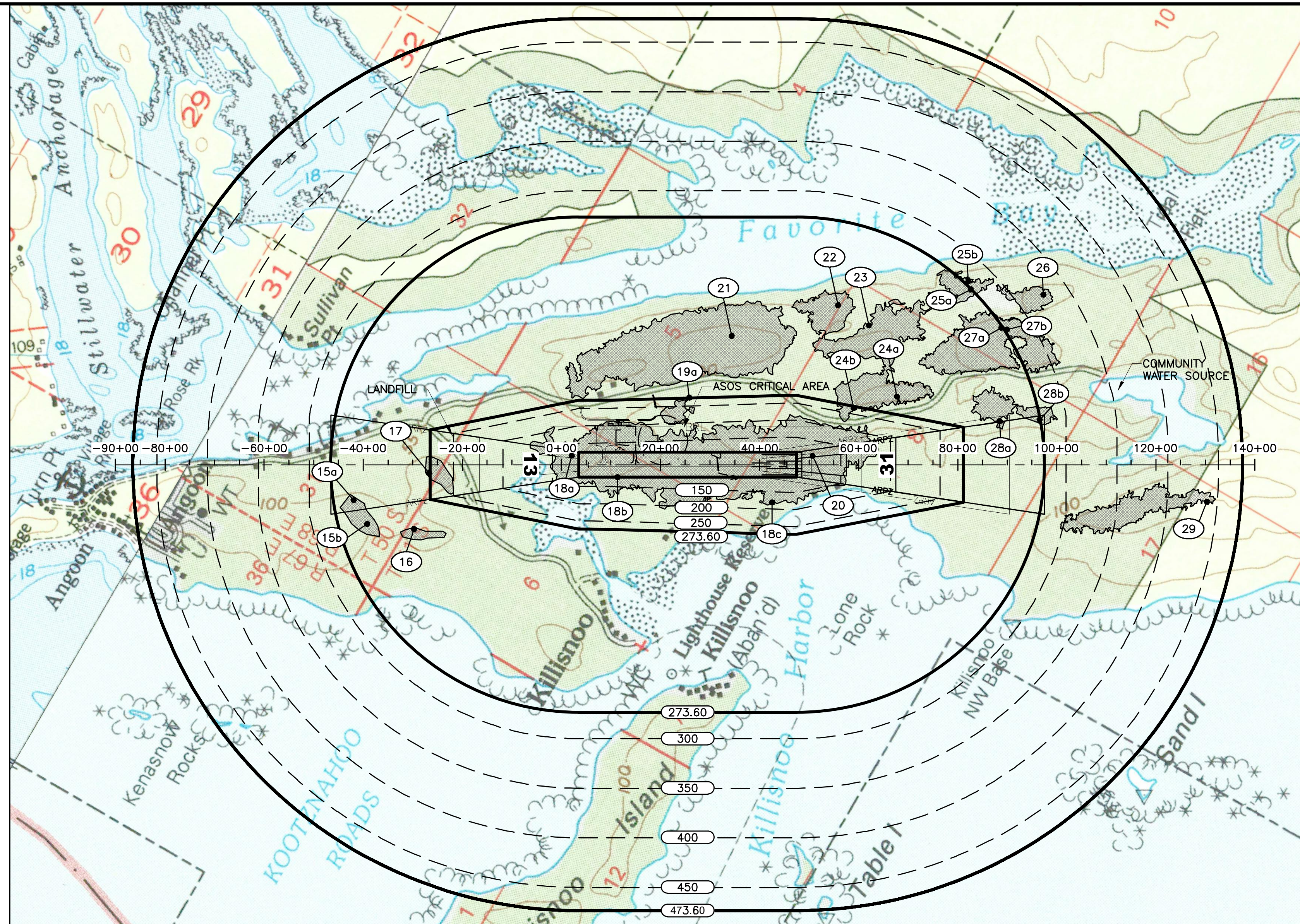
BY	DATE	REVISION

**STATE OF ALASKA
 DEPARTMENT OF TRANSPORTATION
 AND PUBLIC FACILITIES
 SOUTHCOAST REGION**

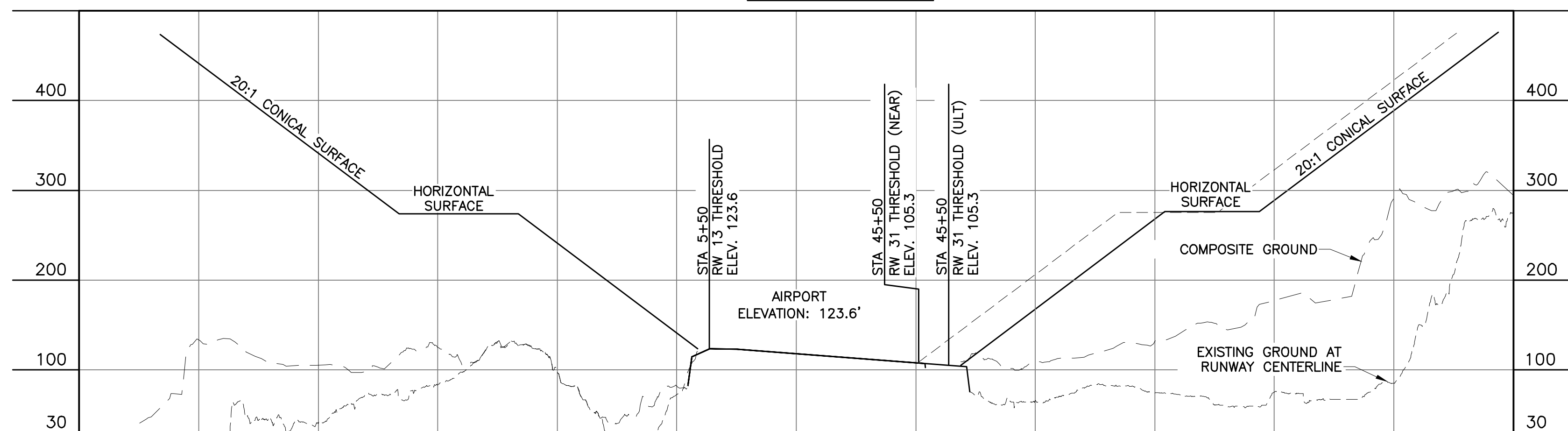
ANGOON AIRPORT
 ANGOON, ALASKA
 AIRPORT LAYOUT PLAN

DATE:
2/12/2020
 SHEET:
4 OF
11

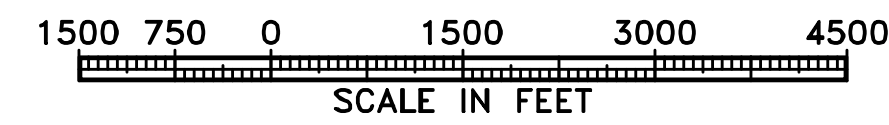
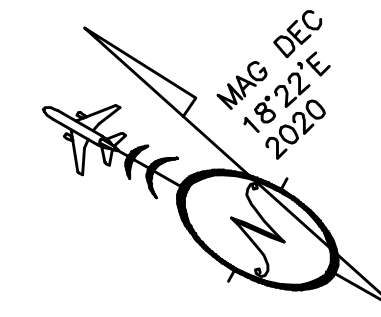
AIRPORT LAYOUT PLAN DRAWING - ULTIMATE



AIRSPACE PLAN



AIRSPACE PROFILE



AIRPORT AIRSPACE LEGEND

	273.6	AIRSPACE ELEVATION (SURFACE DIVIDERS)
	300	AIRSPACE CONTOURS
		RUNWAY CENTERLINE (EXTENDED)

NOTES:

- REFER TO INNER PORTION OF APPROACH SURFACE (SHEETS 6 - 9) FOR CLOSE OBSTRUCTIONS.
- REFER TO THE TERMINAL AREA PLAN (SHEET 10) FOR BUILDING LOCATIONS AND ELEVATIONS.
- MAPPING IS FROM US GEOLOGICAL SURVEY (USGS) MAPS SITKA (B-2) & SITKA (C-2).
- LANDFILL IS 2807' FROM RUNWAY 13 THRESHOLD.
- OBSTRUCTION ANALYSIS BASED ON AN AIRBORNE LIDAR SURVEY COMPLETED BY KODIAK MAPPING IN THE SPRING OF 2017 AND A CONTROL AND TOPOGRAPHIC SURVEY PERFORMED BY DOT&PF IN 2017, BOTH IN ACCORDANCE WITH FAA AC 150/5300-18B.

14 CFR PART 77 DIMENSIONS (ULTIMATE) UTILITY, NP APPROACH, ≥1 SM VISIBILITY

DESCRIPTION	DIMENSION
PRIMARY SURFACE	500'x4400'
HORIZONTAL SURFACE ELEVATION	273.6'
HORIZONTAL SURFACE RADIUS	5,000'
APPROACH SURFACE	500'x2000'x5000'
APPROACH SURFACE SLOPE	20:1
CONICAL SURFACE WIDTH, SLOPE	4000' @ 20:1
TRANSITIONAL SURFACE SLOPE	7:1

14 CFR PART 77 SURFACE OBSTRUCTION DATA

ID#	DESCRIPTION	STATION/OFFSET	TOP ELEV	SURFACE ELEV	SURFACE PENETRATED	SURFACE PENETRATION	DISPOSITION	STAGE TO CORRECT
15a	TREE CLUSTER*	-41+92 / 714 RT	278.5	273.6	APPROACH	4.9	REMOVE	NEAR TERM
15b	TREE CLUSTER*	-39+19 / 1196 RT	288.4	273.6	HORIZONTAL	14.8	TO REMAIN	N/A
16	TREE CLUSTER*	-29+71 / 1299 RT	274.8	273.6	HORIZONTAL	1.2	TO REMAIN	N/A
17	TREE CLUSTER*	-26+72 / 164 RT	288.0	273.6	APPROACH	14.4	REMOVE	NEAR TERM
18a	TREE CLUSTER*	2+14 / 184 LT	240.7	130.4	APPROACH	110.3	REMOVE	NEAR TERM
18b	TREE CLUSTER*	11+36 / 250 RT	246.4	122.4	PRIMARY	124.0	REMOVE	NEAR TERM
18c	TREE CLUSTER*	43+83 / 744 RT	191.5	178.0	TRANSITIONAL	13.5	SELECTIVE REMOVAL	NEAR TERM
19a	TREE CLUSTER*	25+86 / 1360 LT	280.9	273.6	TRANSITIONAL	7.3	SELECTIVE REMOVAL	NEAR TERM
20	TREE CLUSTER*	50+74 / 181 LT	241.7	121.5	APPROACH	120.2	REMOVE	NEAR TERM
21	TREE CLUSTER*	34+40 / 2600 LT	402.4	273.6	HORIZONTAL	128.8	TO REMAIN	N/A
22	TREE CLUSTER*	55+86 / 3224 LT	365.1	273.6	HORIZONTAL	91.5	TO REMAIN	N/A
23	TREE CLUSTER*	62+09 / 2816 LT	564.9	273.6	HORIZONTAL	291.3	TO REMAIN	N/A
24a	TREE CLUSTER*	67+76 / 1375 LT	389.1	273.6	HORIZONTAL	115.5	TO REMAIN	N/A
24b	TREE CLUSTER*	59+04 / 1147 LT	338.3	268.5	TRANSITIONAL	69.8	SELECTIVE REMOVAL	NEAR TERM
25a	TREE CLUSTER*	82+67 / 3540 LT	345.0	273.6	HORIZONTAL	71.4	TO REMAIN	N/A
25b	TREE CLUSTER*	82+12 / 3702 LT	332.8	277.1	CONICAL	55.7	TO REMAIN	N/A
26	TREE CLUSTER*	97+33 / 3435 LT	358.8	326.2	CONICAL	32.6	TO REMAIN	N/A
27a	TREE CLUSTER*	88+85 / 2767 LT	379.1	273.6	HORIZONTAL	105.5	TO REMAIN	N/A
27b	TREE CLUSTER*	89+97 / 2734 LT	398.7	276.2	CONICAL	122.5	TO REMAIN	N/A
28a	TREE CLUSTER*	86+25 / 1374 LT	346.4	273.6	HORIZONTAL	72.8	TO REMAIN	N/A
28b	TREE CLUSTER*	99+98 / 921 LT	322.6	290.7	CONICAL	31.9	TO REMAIN	N/A
29	TREE CLUSTER*	130+30 / 747 RT	493.4	439.6	CONICAL	53.8	TO REMAIN	N/A

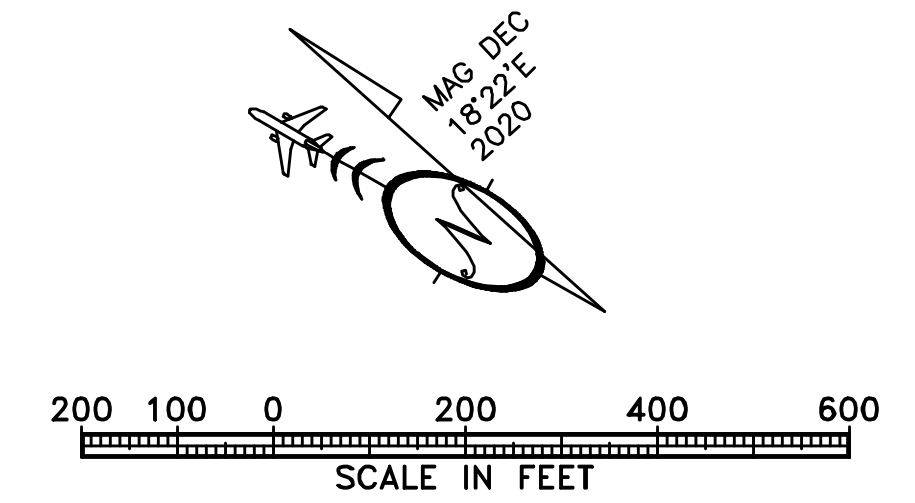
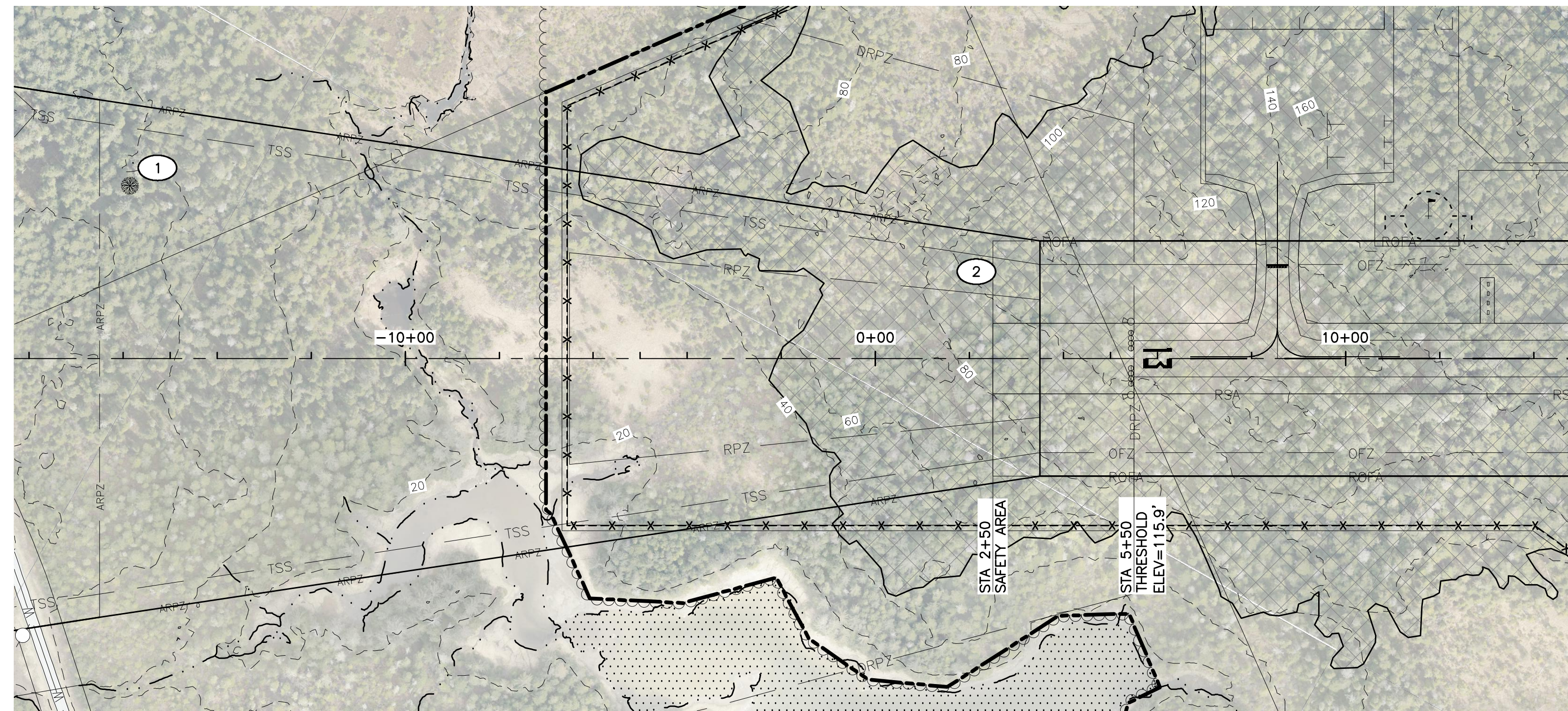
* GREATEST PENETRATION IN A LARGE AREA OF TREE OR TERRAIN PENETRATION. REFER TO HATCHED AREAS ON MAP.

BY	DATE	REVISION

STATE OF ALASKA
DEPARTMENT OF TRANSPORTATION
AND PUBLIC FACILITIES
SOUTHCOST REGION

ANGOON AIRPORT
 ANGOON, ALASKA
 AIRPORT LAYOUT PLAN
 AIRPORT AIRSPACE DRAWING
 (14 CFR PART 77)

DATE: 2/12/2020
 SHEET: 5 OF 11

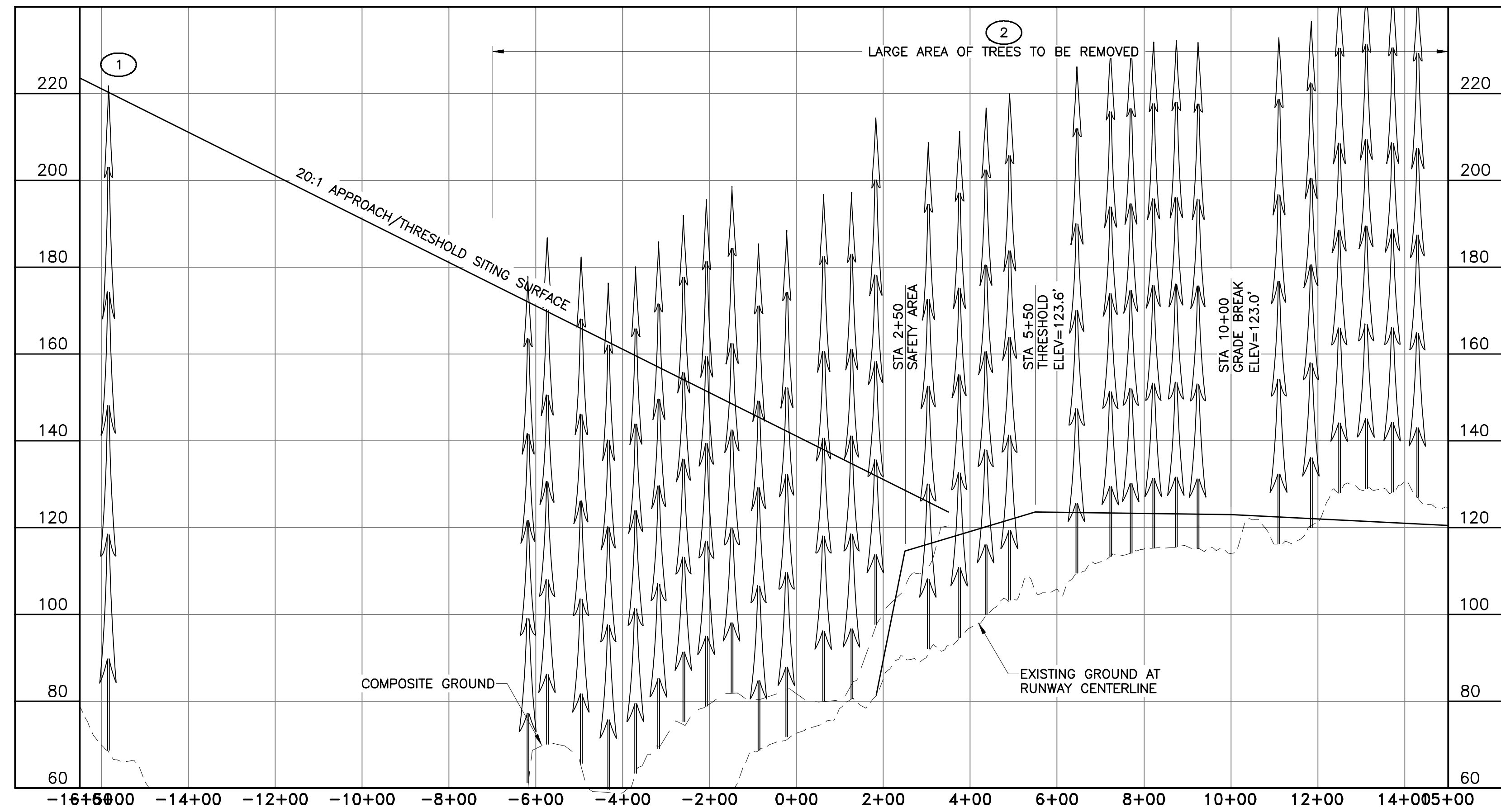


SHEET NOTES:

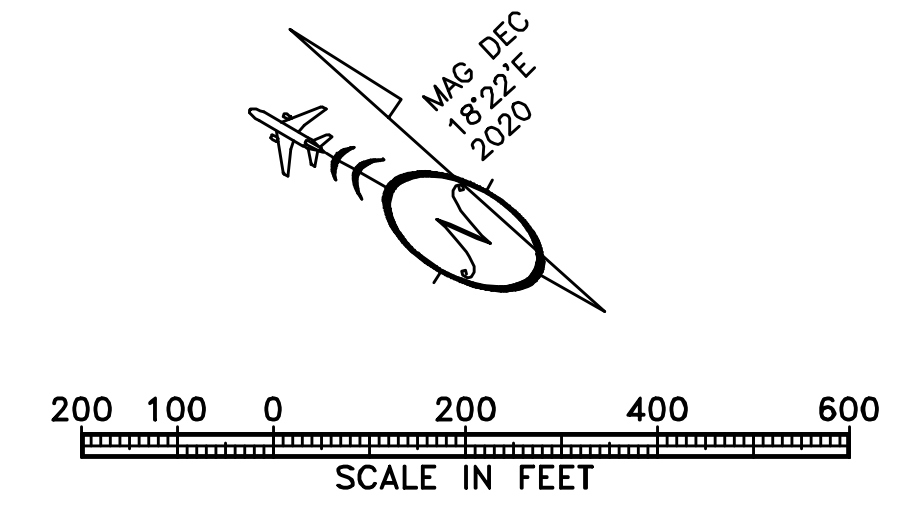
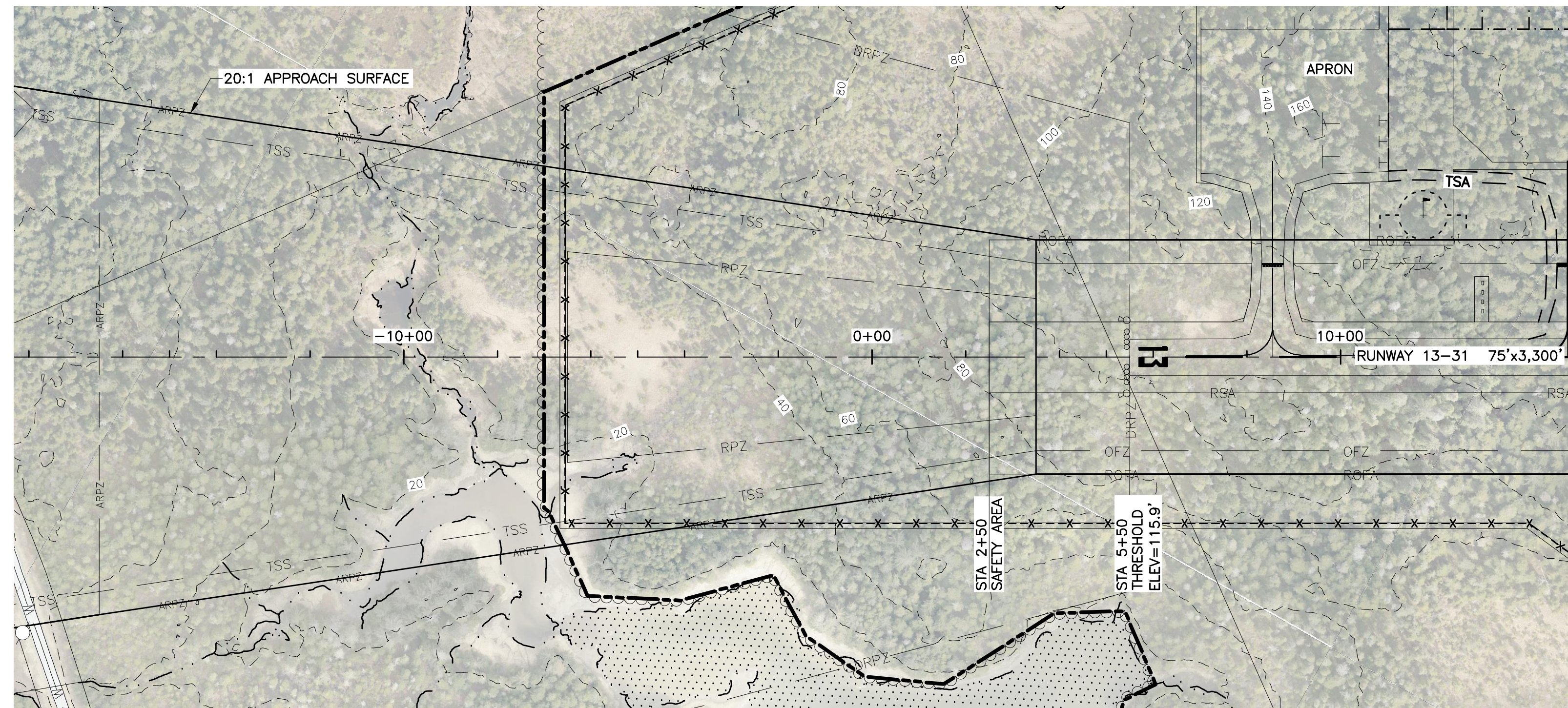
1. OBSTRUCTION ANALYSIS BASED ON AN AIRBORNE LIDAR SURVEY COMPLETED BY KODIAK MAPPING IN THE SPRING OF 2017 AND A CONTROL AND TOPOGRAPHIC SURVEY PERFORMED BY DOT&PF IN 2017, BOTH IN ACCORDANCE WITH FAA AC 150/5300-18B.
2. OBSTRUCTIONS OUTSIDE THE INNER APPROACH ARE SHOWN ON SHEET 5.
3. AFTER NEAR TERM IMPROVEMENTS ARE COMPLETE THERE WILL BE NO RUNWAY 13 THRESHOLD SITING SURFACE OBJECT PENETRATIONS.

OBSTRUCTION DATA (INNER PORTION R/W 13)							
ID#	DESCRIPTION	STATION/OFFSET	TOP ELEV	SURFACE ELEV	SURFACE PENETRATED	SURFACE PENETRATION	DISPOSITION
1	TREE	-15+85 / -367	220.0	220.4	APPROACH	0.4	REMOVE
2	TREE CLUSTER*	2+14 / -184.2	240.7	130.4	APPROACH	110.3	REMOVE
3	STREAM	10+35 / 0	14.3	188.8	APPROACH	N/A	TO REMAIN

* GREATEST PENETRATION IN A LARGE AREA OF TREE OR TERRAIN PENETRATION. REFER TO HATCHED AREAS ON MAP.



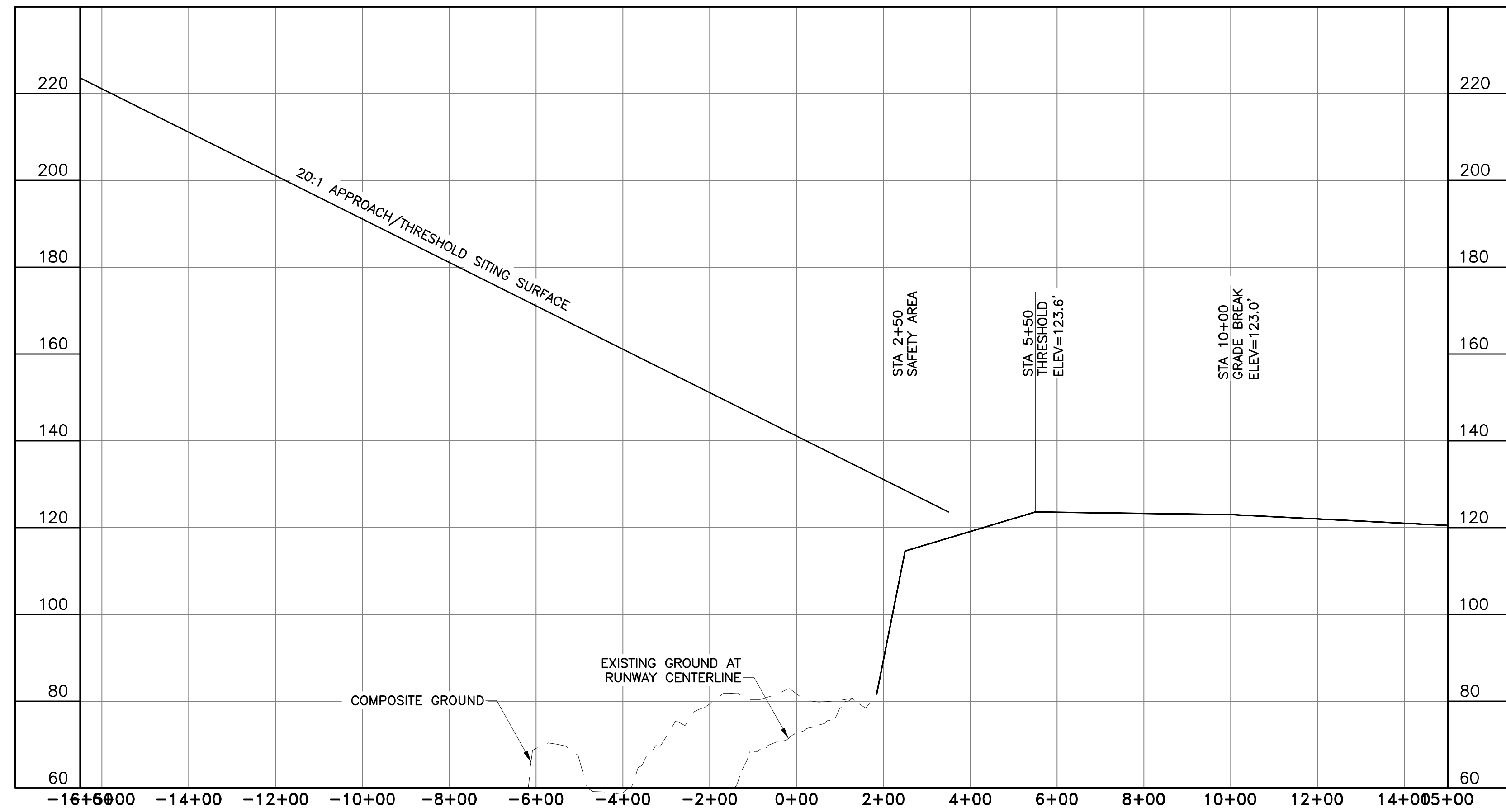
		STATE OF ALASKA DEPARTMENT OF TRANSPORTATION AND PUBLIC FACILITIES SOUTHCOST REGION	
		ANGOON AIRPORT ANGOON, ALASKA AIRPORT LAYOUT PLAN	
		INNER PORTION OF APPROACH SURFACE RUNWAY 13 - NEAR TERM	
DATE:	2/12/2020	SHEET:	6 OF 11
BY:	DATE:	REVISION:	



SHEET NOTES:

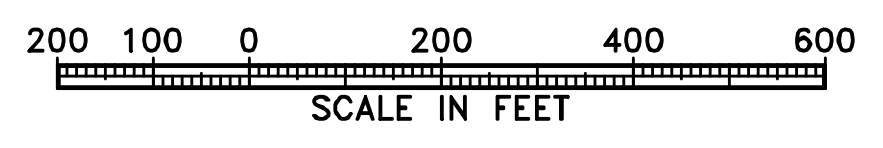
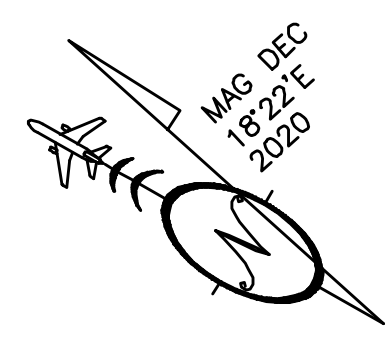
1. OBSTRUCTION ANALYSIS BASED ON AN AIRBORNE LIDAR SURVEY COMPLETED BY KODIAK MAPPING IN THE SPRING OF 2017 AND A CONTROL AND TOPOGRAPHIC SURVEY PERFORMED BY DOT&PF IN 2017, BOTH IN ACCORDANCE WITH FAA AC 150/5300-18B.
2. OBSTRUCTIONS OUTSIDE THE INNER APPROACH ARE SHOWN ON SHEET 5.
3. AFTER NEAR TERM IMPROVEMENTS ARE COMPLETE THERE WILL BE NO RUNWAY 13 THRESHOLD SITING SURFACE OBJECT PENETRATIONS.

OBSTRUCTION DATA (INNER PORTION R/W 13)							
ID#	DESCRIPTION	STATION/OFFSET	TOP ELEV	SURFACE ELEV	SURFACE PENETRATED	SURFACE PENETRATION	DISPOSITION
	NONE						



STATE OF ALASKA DEPARTMENT OF TRANSPORTATION AND PUBLIC FACILITIES SOUTHCOAST REGION		ANGOON AIRPORT ANGOON, ALASKA AIRPORT LAYOUT PLAN	DATE: 2/12/2020 SHEET: 7 OF 11
		INNER PORTION OF APPROACH SURFACE RUNWAY 13 - ULTIMATE	
BY	DATE	REVISION	

Date Plotted: 2/12/2020 3:13 PM
 Layout Name: F:\2017\1717\1717\Angoon_Airport\CAD\CAD001.dwg
 File Name: F:\2017\1717\1717\Angoon_Airport\CAD\CAD001.dwg
 Designed By: EAT
 Drawn By: JMS
 Checked By: JMS
 2/12/2020 3:08 PM



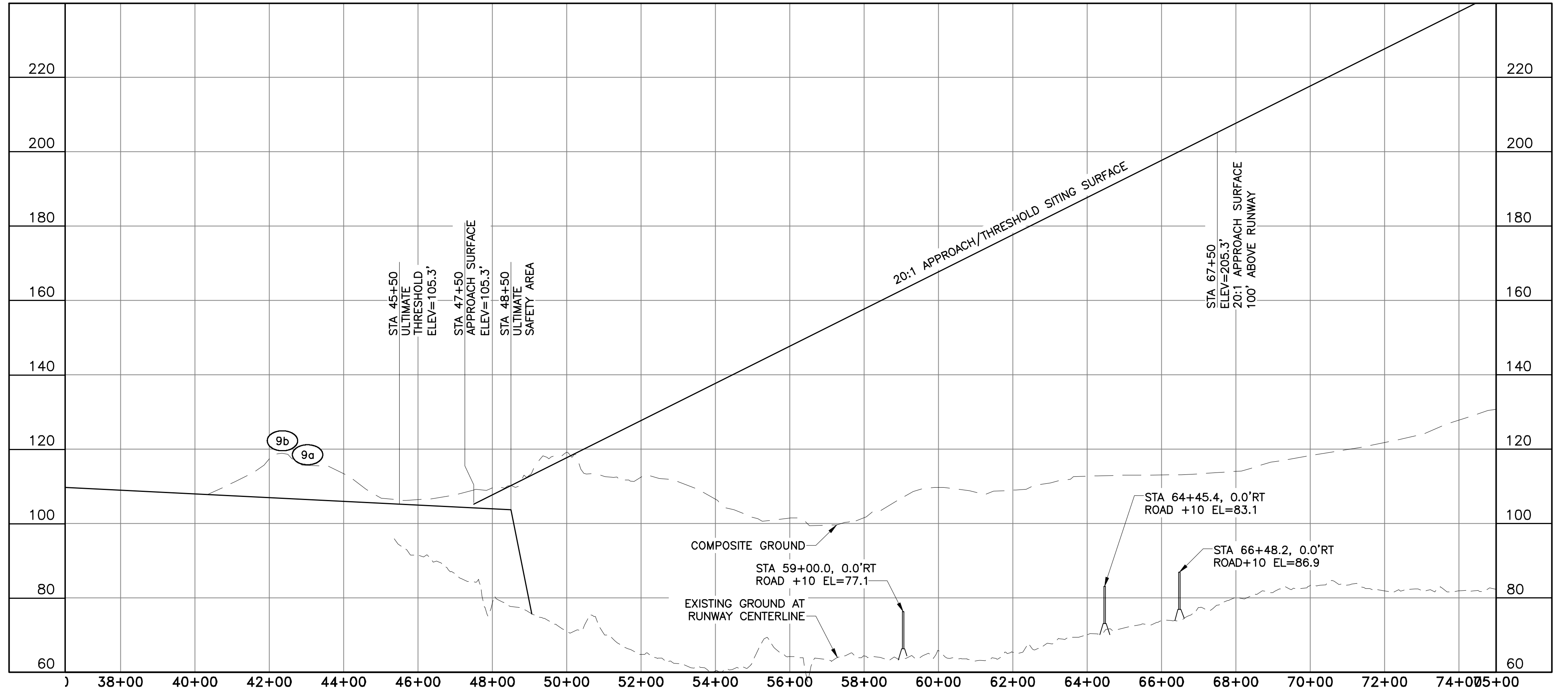
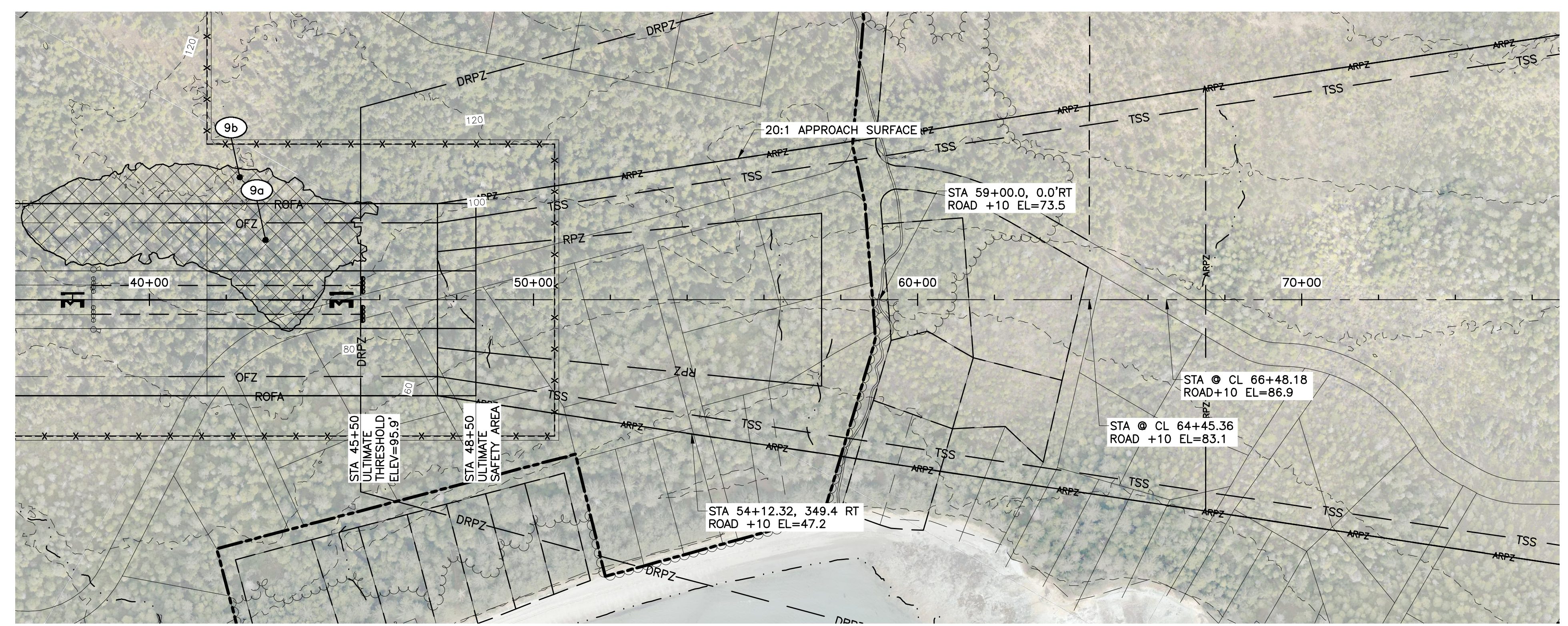
SHEET NOTES:

1. OBSTRUCTION ANALYSIS BASED ON AN AIRBORNE LIDAR SURVEY COMPLETED BY KODIAK MAPPING IN THE SPRING OF 2017 AND A CONTROL AND TOPOGRAPHIC SURVEY PERFORMED BY DOT&PF IN 2017, BOTH IN ACCORDANCE WITH FAA AC 150/5300-18B.
2. OBSTRUCTIONS OUTSIDE THE INNER APPROACH ARE SHOWN ON SHEET 5.
3. AFTER NEAR TERM IMPROVEMENTS ARE COMPLETE THERE WILL BE NO RUNWAY 31 THRESHOLD SITING SURFACE OBJECT PENETRATIONS.

OBSTRUCTION TABLE (INNER PORTION R/W 31)

ID#	DESCRIPTION	STATION/OFFSET	ELEV	SURFACE ELEV	SURFACE PENETRATED	SURFACE PENETRATION	DISPOSITION
9a	TERRAIN POINT*	43+02 / 155 LT	118.0	106.5	PRIMARY	11.5	REMOVE
9b	TERRAIN POINT*	42+35 / 319 LT	120.8	116.7	TRANSITIONAL	4.1	REMOVE

* GREATEST PENETRATION IN A LARGE AREA OF TREE OR TERRAIN PENETRATION. REFER TO HATCHED AREAS ON MAP.



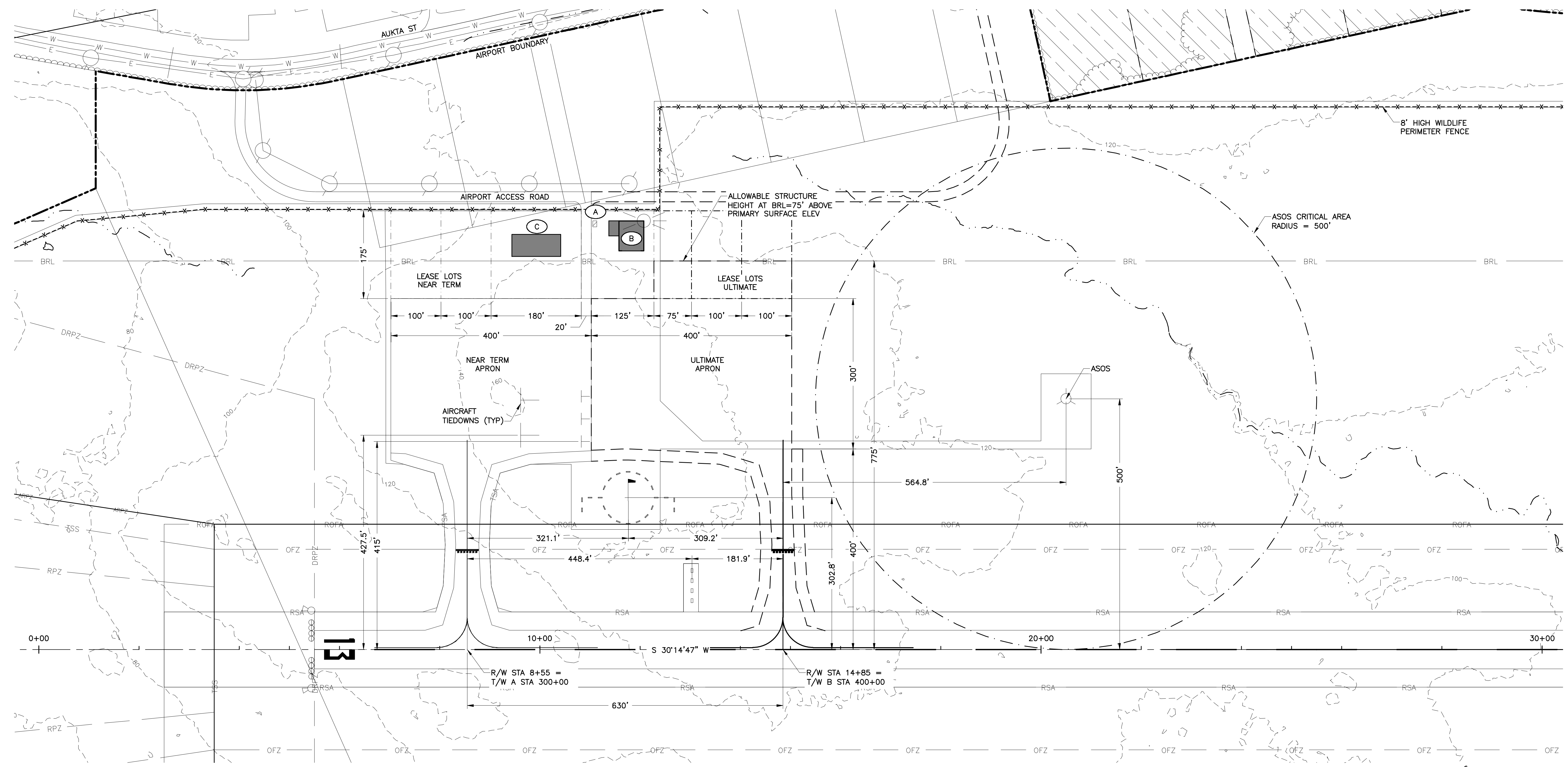
BY	DATE	REVISION

STATE OF ALASKA
DEPARTMENT OF TRANSPORTATION
AND PUBLIC FACILITIES
SOUTHCOST REGION

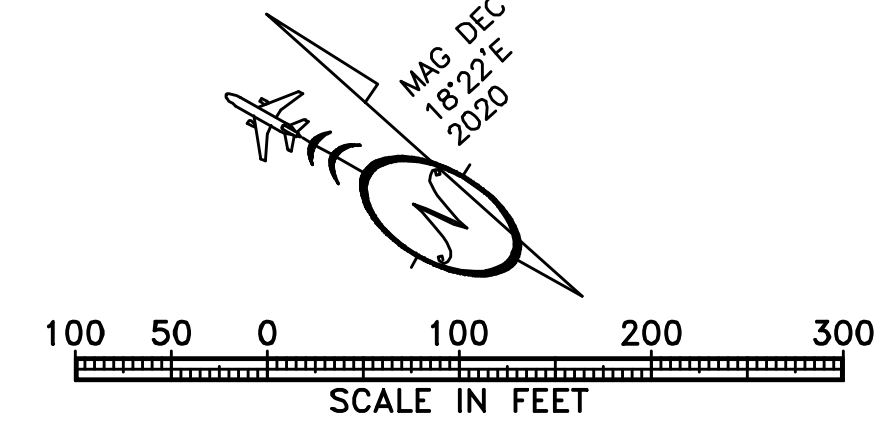
ANGOON AIRPORT
 ANGOON, ALASKA
 AIRPORT LAYOUT PLAN
 INNER PORTION OF APPROACH SURFACE
 RUNWAY 31 - ULTIMATE

DATE:
2/12/2020
 SHEET:
9
OF
11

Designed By: EAT
 Drawn By: JMS
 Checked By: JMS
 Date Plotted: 2/12/2020 1:37 PM
 Layout Name: F:\320717\1717171717\1717171717\1717171717.dwg
 File Name:



BUILDING DATA					
BLDG	DESCRIPTION	STATION/OFFSET	TOP ELEV	OBSTRUCTION MARKING	REMARKS
A	ELECTRICAL EQUIPMENT BUILDING (EEB)	11+10 / 843'LT	145'	NONE	20' BUILDING HEIGHT (ASSUMED)
B	SNOW REMOVAL EQUIPMENT BUILDING (SREB)	11+83 / 795'LT	175'	NONE	50' BUILDING HEIGHT (ASSUMED)
C	TERMINAL FACILITY	9+93 / 784'LT	165'	NONE	40' BUILDING HEIGHT (ASSUMED)

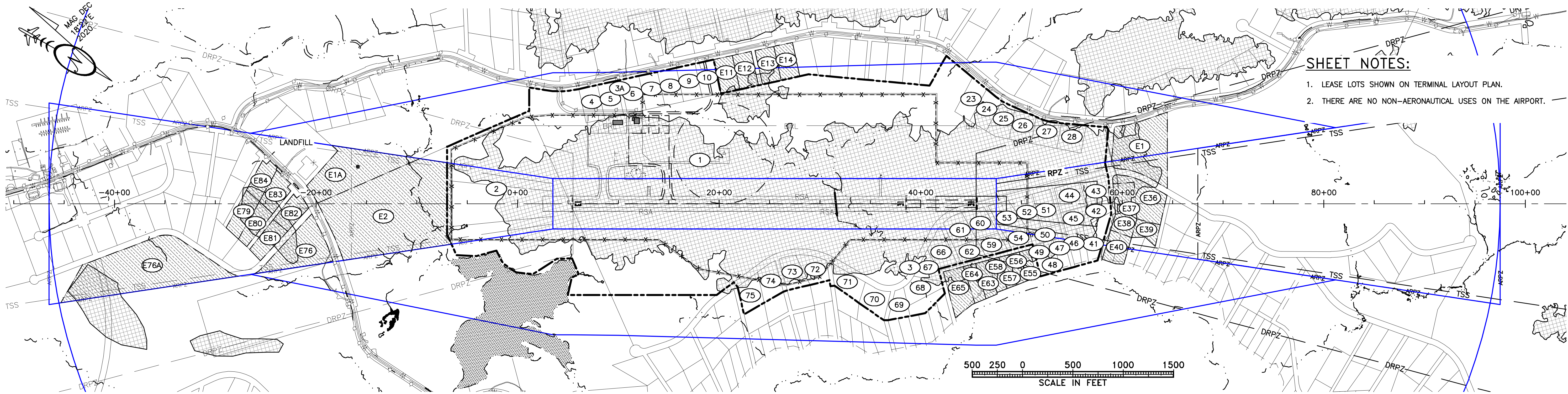


BY	DATE	REVISION

STATE OF ALASKA
DEPARTMENT OF TRANSPORTATION
AND PUBLIC FACILITIES
SOUTHCOST REGION

ANGOON AIRPORT
 ANGOON, ALASKA
 AIRPORT LAYOUT PLAN
 TERMINAL AREA DRAWING

DATE: 2/12/2020	SHEET: 10 OF 11
--------------------	--------------------------



SHEET NOTES:
 1. LEASE LOTS SHOWN ON TERMINAL LAYOUT PLAN.
 2. THERE ARE NO NON-AERONAUTICAL USES ON THE AIRPORT.

ID #	INTEREST	GRANTOR	GRANTEE	PARCEL SIZE (AC)	DATE ACQUIRED	RECORDED DOC NO	ACQUIRED AIP NO
1	FEE SIMPLE	KOOTZNOOWOO	DOT&PF	179.78	TBD	TBD	TBD
E1	AVIGATION ESMT	KOOTZNOOWOO	DOT&PF	6.73	TBD	TBD	TBD
E1A	AVIGATION ESMT	KOOTZNOOWOO	DOT&PF	6.43	TBD	TBD	TBD
2	FEE SIMPLE	CITY OF ANG	DOT&PF	38.04	TBD	TBD	TBD
E2	AVIGATION ESMT	CITY OF ANG	DOT&PF	20.73	TBD	TBD	TBD
3	FEE SIMPLE	CITY OF ANG	DOT&PF	8.34	TBD	TBD	TBD
3A	FEE SIMPLE	CITY OF ANG	DOT&PF	0.32	TBD	TBD	TBD
4	FEE SIMPLE	A. ASIS	DOT&PF	1.50	TBD	TBD	TBD
5	FEE SIMPLE	D. VIERTHALER	DOT&PF	1.50	TBD	TBD	TBD
6	FEE SIMPLE	B. GEORGE	DOT&PF	1.50	TBD	TBD	TBD
7	FEE SIMPLE	R. DEMMERT	DOT&PF	1.50	TBD	TBD	TBD
8	FEE SIMPLE	KOOTZNOOWOO	DOT&PF	1.50	TBD	TBD	TBD
9	FEE SIMPLE	C. FRED	DOT&PF	1.50	TBD	TBD	TBD
10	FEE SIMPLE	J. THOMPSON	DOT&PF	1.50	TBD	TBD	TBD
E11	AVIGATION ESMT	V. JAMES	DOT&PF	1.50	TBD	TBD	TBD
E12	AVIGATION ESMT	E. JAMES	DOT&PF	1.50	TBD	TBD	TBD
E13	AVIGATION ESMT	E. JACK	DOT&PF	1.50	TBD	TBD	TBD
E14	AVIGATION ESMT	A. ALBERT	DOT&PF	1.50	TBD	TBD	TBD
23	FEE SIMPLE	KOOTZNOOWOO	DOT&PF	1.50	TBD	TBD	TBD
24	FEE SIMPLE	KOOTZNOOWOO	DOT&PF	1.50	TBD	TBD	TBD
25	FEE SIMPLE	KOOTZNOOWOO	DOT&PF	1.50	TBD	TBD	TBD
26	FEE SIMPLE	KOOTZNOOWOO	DOT&PF	1.50	TBD	TBD	TBD
27	FEE SIMPLE	KOOTZNOOWOO	DOT&PF	1.50	TBD	TBD	TBD
28	FEE SIMPLE	KOOTZNOOWOO	DOT&PF	1.50	TBD	TBD	TBD
E36	AVIGATION ESMT	KOOTZNOOWOO	DOT&PF	2.72	TBD	TBD	TBD
E37	AVIGATION ESMT	R. HOGUE	DOT&PF	1.50	TBD	TBD	TBD
E38	AVIGATION ESMT	T. JAMES	DOT&PF	1.00	TBD	TBD	TBD
E39	AVIGATION ESMT	MULTIPLE	DOT&PF	1.00	TBD	TBD	TBD
E40	AVIGATION ESMT	KOOTZNOOWOO	DOT&PF	1.50	TBD	TBD	TBD

ID #	INTEREST	GRANTOR	GRANTEE	PARCEL SIZE (AC)	DATE ACQUIRED	RECORDED DOC NO	ACQUIRED AIP NO
41	FEE SIMPLE	KOOTZNOOWOO	DOT&PF	2.25	TBD	TBD	TBD
42	FEE SIMPLE	T. JAMES	DOT&PF	1.00	TBD	TBD	TBD
43	FEE SIMPLE	E. KOOKESH	DOT&PF	1.50	TBD	TBD	TBD
44	FEE SIMPLE	J. FRANK	DOT&PF	1.50	TBD	TBD	TBD
45	FEE SIMPLE	MULTIPLE	DOT&PF	1.00	TBD	TBD	TBD
46	FEE SIMPLE	R. SOBOLEFF	DOT&PF	0.75	TBD	TBD	TBD
47	FEE SIMPLE	J. MCCLUSKEY	DOT&PF	0.75	TBD	TBD	TBD
48	FEE SIMPLE	J. BROWN	DOT&PF	0.75	TBD	TBD	TBD
49	FEE SIMPLE	E. MCCLUSKEY	DOT&PF	0.75	TBD	TBD	TBD
50	FEE SIMPLE	MULTIPLE	DOT&PF	1.00	TBD	TBD	TBD
51	FEE SIMPLE	KOOTZNOOWOO	DOT&PF	1.50	TBD	TBD	TBD
52	FEE SIMPLE	A.R. BROWN	DOT&PF	1.50	TBD	TBD	TBD
53	FEE SIMPLE	MULTIPLE	DOT&PF	1.50	TBD	TBD	TBD
54	FEE SIMPLE	J. HUNTER	DOT&PF	1.00	TBD	TBD	TBD
E55	AVIGATION ESMT	I. CHULIK	DOT&PF	0.70	TBD	TBD	TBD
E56	AVIGATION ESMT	I. CHULIK	DOT&PF	0.73	TBD	TBD	TBD
E57	AVIGATION ESMT	I. CHULIK	DOT&PF	0.76	TBD	TBD	TBD
E58	AVIGATION ESMT	G. MILLER	DOT&PF	0.79	TBD	TBD	TBD
59	FEE SIMPLE	D. LOGAN	DOT&PF	1.00	TBD	TBD	TBD
60	FEE SIMPLE	MULTIPLE	DOT&PF	1.50	TBD	TBD	TBD
61	FEE SIMPLE	KOOTZNOOWOO	DOT&PF	1.50	TBD	TBD	TBD
62	FEE SIMPLE	KOOTZNOOWOO	DOT&PF	1.00	TBD	TBD	TBD
E63	AVIGATION ESMT	MULTIPLE	DOT&PF	1.00	TBD	TBD	TBD
E64	AVIGATION ESMT	MULTIPLE	DOT&PF	1.00	TBD	TBD	TBD
E65	AVIGATION ESMT	T. FOGARTY	DOT&PF	2.08	TBD	TBD	TBD

ID #	INTEREST	GRANTOR	GRANTEE	PARCEL SIZE (AC)	DATE ACQUIRED	RECORDED DOC NO	ACQUIRED AIP NO
66	FEE SIMPLE	G. NELSON	DOT&PF	1.50	TBD	TBD	TBD
67	FEE SIMPLE	KOOTZNOOWOO	DOT&PF	1.00	TBD	TBD	TBD
68	FEE SIMPLE	R. EDENSHAW	DOT&PF	1.50	TBD	TBD	TBD
69	FEE SIMPLE	KOOTZNOOWOO	DOT&PF	1.00	TBD	TBD	TBD
70	FEE SIMPLE	MULTIPLE	DOT&PF	1.50	TBD	TBD	TBD
71	FEE SIMPLE	R. GEORGE	DOT&PF	1.50	TBD	TBD	TBD
72	FEE SIMPLE	MULTIPLE	DOT&PF	1.50	TBD	TBD	TBD
73	FEE SIMPLE	S. JOHNSON	DOT&PF	1.50	TBD	TBD	TBD
74	FEE SIMPLE	KOOTZNOOWOO	DOT&PF	1.50	TBD	TBD	TBD
75	FEE SIMPLE	MULTIPLE	DOT&PF	1.50	TBD	TBD	TBD
E76	AVIGATION ESMT	KOOTZNOOWOO	DOT&PF	4.52	TBD	TBD	TBD
E76A	AVIGATION ESMT	KOOTZNOOWOO	DOT&PF	15.09	TBD	TBD	TBD
E79	AVIGATION ESMT	G. JOHNSON	DOT&PF	1.50	TBD	TBD	TBD
E80	AVIGATION ESMT	N. KOOKESH	DOT&PF	1.50	TBD	TBD	TBD
E81	AVIGATION ESMT	B. JACK	DOT&PF	1.50	TBD	TBD	TBD
E82	AVIGATION ESMT	K. GONZALES	DOT&PF	1.50	TBD	TBD	TBD
E83	AVIGATION ESMT	M. PERTERSEN	DOT&PF	1.67	TBD	TBD	TBD
E84	AVIGATION ESMT	D. STARR	DOT&PF	1.50	TBD	TBD	TBD

BY	DATE	REVISION

**STATE OF ALASKA
 DEPARTMENT OF TRANSPORTATION
 AND PUBLIC FACILITIES
 SOUTHCOST REGION**

ANGOON AIRPORT
 ANGOON, ALASKA
 AIRPORT LAYOUT PLAN
 AIRPORT PROPERTY MAP

DATE:
2/12/2020
 SHEET:
11
 OF
11